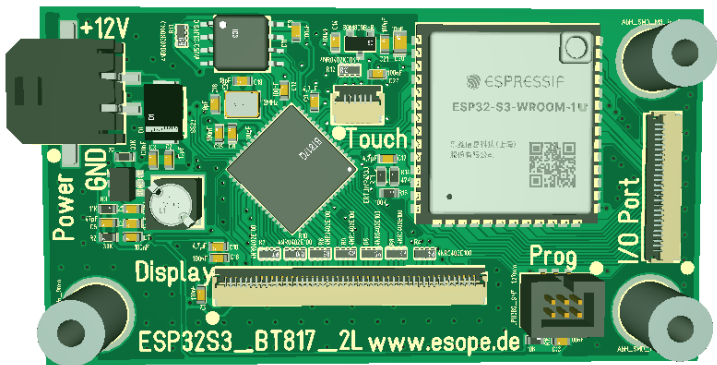


ESP32S3_BT817

Highlights



- ✓ RGB-interface for family-display-concept
- ✓ Interfaces extensible by piggy-back-modules
- ✓ Industrial standard
- ✓ WLAN / Bluetooth
- ✓ extensive software-library

Features

The ESP32S3_BT817 is an evaluation board from the ESoPe platform series, based on an Espressif ESP32S3 CPU. It is used to control RGB LC displays from the family-display concept. With optional piggy-back modules, the ESP32S3_BT817 can be expanded to include various interfaces.

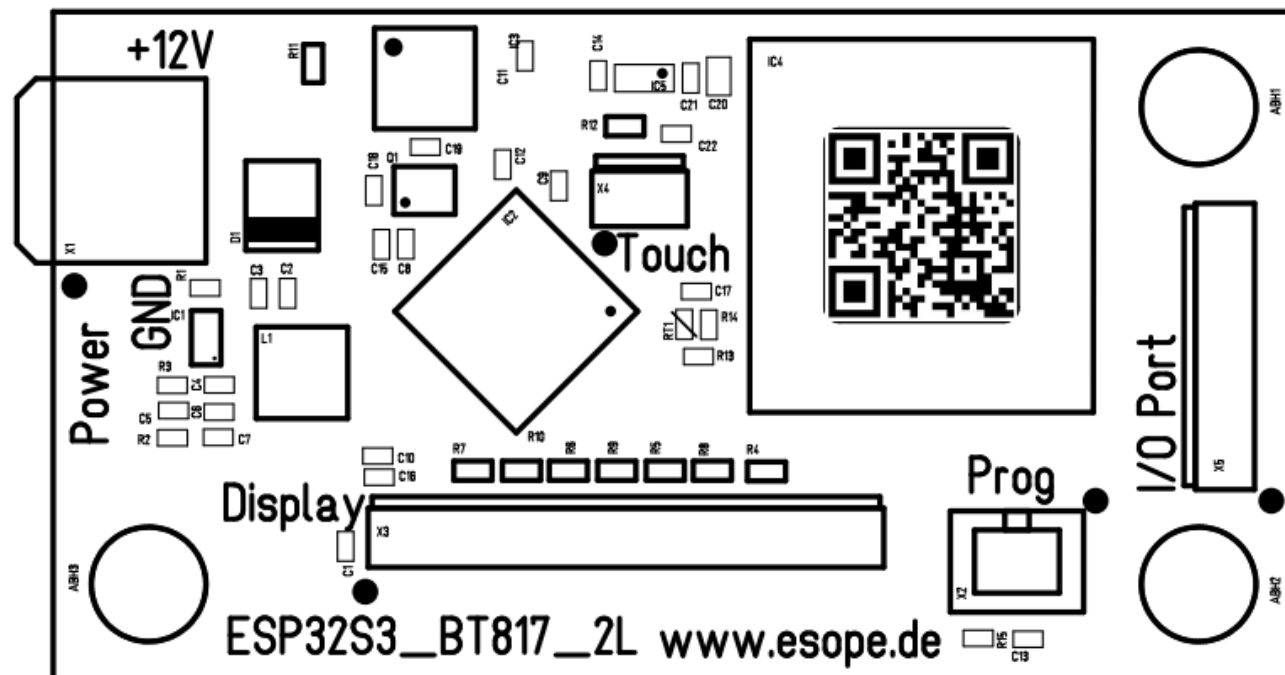
Technical Specification

Parameter	Value
Power Supply	12 V(DC)
Power Consumption	approx. 130mA
Operating Ambient Temperature	-10...+70°C
Dimensions	80mm x 50mm
Weight	16g
Conformity	RoHS

Schematic

Details in document ESP32S3_BT817_2A_SCH.pdf

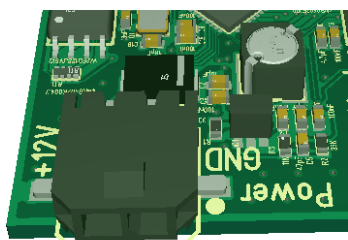
Board



Connection Plan

Power Supply

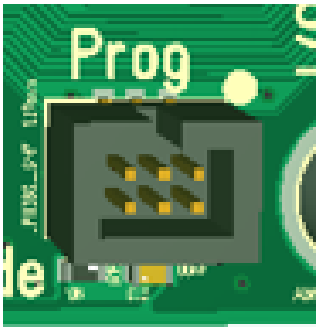
X1: MPC3 1x2 connector



pin	function
1	GND
2	+12V

ESP32 Programming - Interface

X2: pin header, 6-pole, grid 1.27



pin	function
1	/RESET
2	+3V3
3	TXD
4	GND
5	RXD
6	MD4

Interface Display

X3: connection ZIF horizontal back locking, 50-pole, grid 0.5

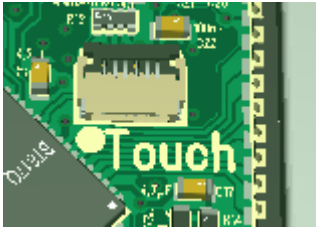


pin	function
1	GND
2	+3V3
3	+3V3
4	+12V
5	+12V
6	BACKLIGHT
7	GND
8	Blue 7
9	Blue 6
10	Blue 5
11	Blue 4
12	GND
13	Blue 3

14	Blue 2
15	Blue 1
16	Blue 0
17	GND
18	Green 7
19	Green 6
20	Green 5
21	Green 4
22	GND
23	Green 3
24	Green 2
25	Green 1
26	Green 0
27	GND
28	Red 7
29	Red 6
30	Red 5
31	Red 4
32	GND
33	Red 3
34	Red 2
35	Red 1
36	Red 0
37	GND
38	HSYNC
39	VSYNC
40	GND
41	DE
42	GND
43	PCLK
44	GND
45	NC
46	NC
47	NC
48	DISP
49	/RESET
50	GND

Touch

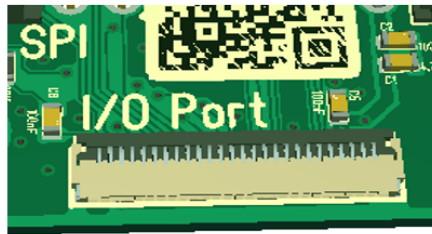
X4: ZIF-connector, 6-pole, grid 0.5



pin	function
1	PMOD I ² C INT
2	PMOD I ² C /RESET
3	PMOD I ² C SCL
4	PMOD I ² C SDA
5	GND
6	+3V3

I/O – port / communication with ESP32S3_BT817 piggy-back boards

X5: ZIF-connector 26-pole, grid 0.5



pin	function
1	Audio_L
2	PMOD SPI2 /CS
3	PMOD SPI2 /CS2
4	PMOD SPI2 /INT
5	PMOD SPI2 /RESET
6	PMOD SPI MISO
7	PMOD SPI MOSI
8	PMOD SPI Clock
9	PMOD SPI /CS
10	PMOD SPI /CS2
11	/SD SGM2820 (Audio)
12	PMOD SPI /INT
13	PMOD SPI /RESET
14	GND
15	I ² C SDA
16	I ² C SCL
17	I ² C /RESET
18	I ² C INT
19	GND
20	RS485 /RE_DE
21	RS485 RXD
22	RS485 TXD
23	+3V3 DC
24	+3V3 DC
25	+12V DC
26	+12V DC

Copyrights and Trademarks

All trade names, trademarks and registered trademarks mentioned herein are the property of their respective owners and are hereby acknowledged.

Change History

File: ESP32S3_BT817_2A_DS_en

Revision	Date	State	Author
1.0	2024-03-25	Initial Release	Stefan Peters

Terms & Conditions of Usage

The product data contained in this product data sheet is exclusively intended for technically trained staff. Changes of this product data sheet are reserved. Threshold of originality on this document, as well on all included sketches, illustrations and fotos remain at ESoPe GmbH. We point out explicitly to § 97ff UrhG and § 110ff UrhG. Changes and mistakes reserved.

You and your technical departments will have to evaluate the suitability of the product for the intended application and the completeness of the product data with respect to such application. Should you require product information in excess of the data given in this product data sheet or which concerns the specific application of our product, please contact our sales office.

ESoPe GmbH (ESoPe) reserves the right to make changes to its products or to discontinue any product or service without notice, and advises its customers to obtain the latest version of relevant information to verify, before placing orders, that the information being relied on is current. ESoPe warrants performance of its products and related software to the specifications applicable at the time of sale in accordance with ESoPe’s standard warranty. Testing and other quality control techniques are utilized to the extent ESoPe deems necessary to support this warranty. Specific testing of all parameters of each device is not necessarily performed, except those mandated by government requirements. Certain applications using semiconductor products may involve potential risks of death, personal injury, or severe property or environmental damage (“Critical Applications”). ESoPe products are not designed, intended, authorized or warranted to be suitable for use in life-support applications, devices or systems or other critical applications. Inclusion of ESoPe products in such applications is understood to be fully at the risk of the customer. Use of ESoPe products in such applications requires the written approval of authorised representative. Questions concerning potential risk applications should be directed to ESoPe. In order to minimize risks associated with the customer’s applications, adequate design and operating safeguards should be provided by the customer to minimize inherent or procedural hazards. ESoPe assumes no liability for applications assistance, customer product design, software performance, or infringement of patents or services described herein. Nor does ESoPe warrant or represent that any license, either express or implied, is granted under any patent right, copyright, mask work right, or other intellectual property right of ESoPe covering or relating to any combination, machine, or process in which such products or services might be or are used.